

**The COMPASS Scheme is the only
Security Marking System approved
and endorsed by British Marine**

Theft of boats and equipment has become a multi-million pound headache in the UK, causing misery and financial loss to thousands of marine enthusiasts every year.

Standard security measures in the marine world are often basic at best and wholly inadequate at worst - certainly not anything like those found today on most modern cars. As such the Police face an almost impossible task in tackling this crime wave.

Typically the average boat is extremely vulnerable to theft not only because of the limited identification offered but also due to the fact that boats are easy to move whilst on trailers and the portability of many smaller outboard engines also makes them an attractive target. With many outboard engines more expensive than a small family hatchback, and so readily stolen, transported and altered it's easy to see why criminals have turned their attention to the marine world.

Seeing the increase in marine theft, British Marine has made positive steps in helping owners avoid it by announcing a new security initiative called COMPASS (Combined Official Marine Protection and Security System). The COMPASS Scheme is a technological answer to the issue of theft addressing one of the key weak areas the marine market has - one which criminals are exploiting - identity. Using state of the art technologies supplied by industry leading security specialists Datatag ID Ltd, the COMPASS Scheme will use a raft of sophisticated and almost impossible to combat identification methods to ensure that a boat or outboard's true identity can be determined quickly and easily either by Police or prospective owners.

By fitting a COMPASS System to your boat or outboard you'll protect yourself and help in the fight against marine crime.

www.britishmarine.co.uk

**UK's most trusted supplier of
security marking technologies**



**The Official Construction and Agricultural
Equipment Security & Registration Scheme**
www.cesarscheme.org



**The Official Motorcycle and Scooter
Tagged Equipment Registration Security Scheme**
www.masterscheme.org

**What is →
DATATAG?**



Secured by Design



www.datatag.co.uk

**STOP MARINE
THEFT**



**The Ultimate Protection
for Marine Craft
and Outboard Motors**

www.compassscheme.org

STOP MARINE THEFT



A unique layered approach
to crime prevention and
Marine Craft identification



Secured by Design



Including Forensic DNA Marking*

Simple to fit - hard to beat!
A technological solution
to marine crime.



Secured by Design



COMPASS Scheme - the ONLY system
available to offer ALL of the below
in one easy to install 'kit'

- ✓ Positive, proven theft deterrent
- ✓ Tamper evident identification label
- ✓ RFID Transponders
- ✓ Microscopic Datadots® - protects all components
- ✓ Forensic DNA Marking*
- ✓ Ultra Destruct Visible ID Labels*
- ✓ "Stealth" UV etching**
- ✓ 24/7 UK Secure Contact Centre - instant Police access to database
- ✓ Portside, immediate identification - no lengthy laboratory testing
- ✓ Single cost - no annual fees
- ✓ Unique registration number - one number / one machine
- ✓ Transferable to new owner

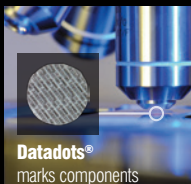
*Boat System Only **Outboard Motor System



Visible ID Labels



Self Adhesive Tag



Datadots® marks components



Ultimate TE Warning Label



Transponder Glass Tag



Datadots® marks components



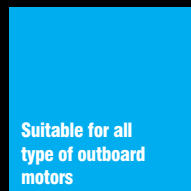
Datatag Forensic DNA Marking



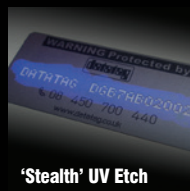
Ultra Destruct Visible ID Labels



Lifetime protection
One low cost
NO HIDDEN or
MONTHLY FEES



Suitable for all
type of outboard
motors



'Stealth' UV Etch



Lifetime protection
One low cost
NO HIDDEN or
MONTHLY FEES

The only Security Marking System
approved and endorsed by British Marine

BRITISH MARINE
LEADING THE INDUSTRY

Powered by
DATATAG
SECURITY
datatag.co.uk